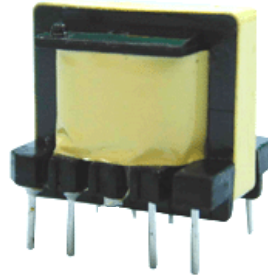


Features

1. Compact,light,easy surface mounting
2. Autometed mounting and reflow soldering
3. High impedance and low loss
4. The products contain no lead and also support lead-free solderir
- 5, All matrials ROHS compliance and use are UL listed



Application

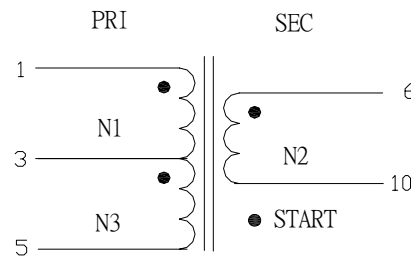
1. Switching power supply
2. Computer products
3. DVD
4. DC-DC converter



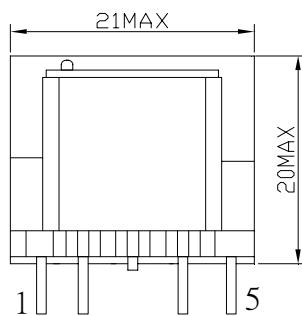
Electrical characteristics

Model No.	Winding ratio Primary secondary	Inductance	secondary leakage inductance	DC Resistance at:25°C	Insulation withstand voltage	Test frequency voltage (KHz/V)
EE-19T98L770	(1-5):(6-10)=49:11	(1-5)=770uH±10%	30uH MAX (sec short)	(1-5)=2.3Ω MAX (6-10)=140mΩ MAX	pri to sec AC 3.0KV/5mA 1SEC pri to core AC 1.0KV/5mA 1SEC sec to core AC 1.0KV/5mA 1SEC	1KHz/0.25V

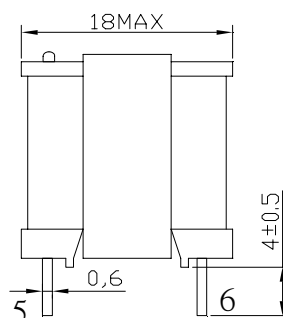
Schematics(bottom)



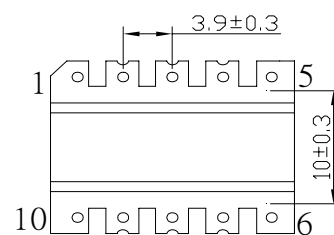
Shapes and dimensions unit: mm



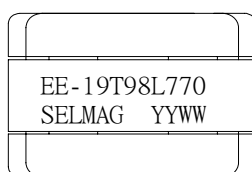
EVELATION VIEW



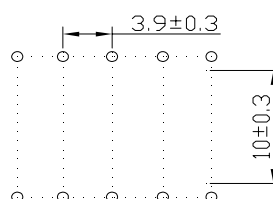
SIDE VIEW



BOTTOM VIEW



TOP VIEW



Recommended landing dimensions